

Chris by Fibre

without welt flap pockets 
with welt flap pockets 

2 - 14 y 

pattern measurements (in cm)



size	2	3	4	5	6	8	10	12	14
side length*	48.75	52.5	56.25	60	63.75	71.25	78.5	86	93.5
inseam length	23.25	26.5	29.75	33	36.25	42.75	49.5	56	62.75
waist with elastic	42.75	44	45.25	46.5	47.75	50.5	53	55.5	58
waistline without elastic	68	70	72	74	76	80	84	88	92
hips	86	88.25	90	91.75	93.75	97.75	101.75	106	110

* Including the waistband.

notions



- Thread
- Iron-on interfacing: max. 20 cm
- Elastic (3.5 cm): see table
- Closed end zip: see table
- Button (Ø 1.5 cm): 2
- Fabric: see table

closed end zip		2	3	4	5	6	8	10	12	14
length	cm	10	10	10	12	12	12	12	12	12
elastic		2	3	4	5	6	8	10	12	14
length	cm	25	25.75	26.5	27.25	28	29.5	31	32.5	34
fabric		2	3	4	5	6	8	10	12	14
fabric width 110 cm	cm	95	100	110	115	125	140	175	190	205
fabric width 140 cm	cm	80	80	80	85	105	115	120	130	145

The corresponding fabric layout can be found on page 6 of these sewing instructions.

fabric advice You're spoilt for choice when it comes to making the Chris trousers. Corduroy, denim, cotton twill, gabardine, linen, lyocell, flannel – those are just a handful of options.

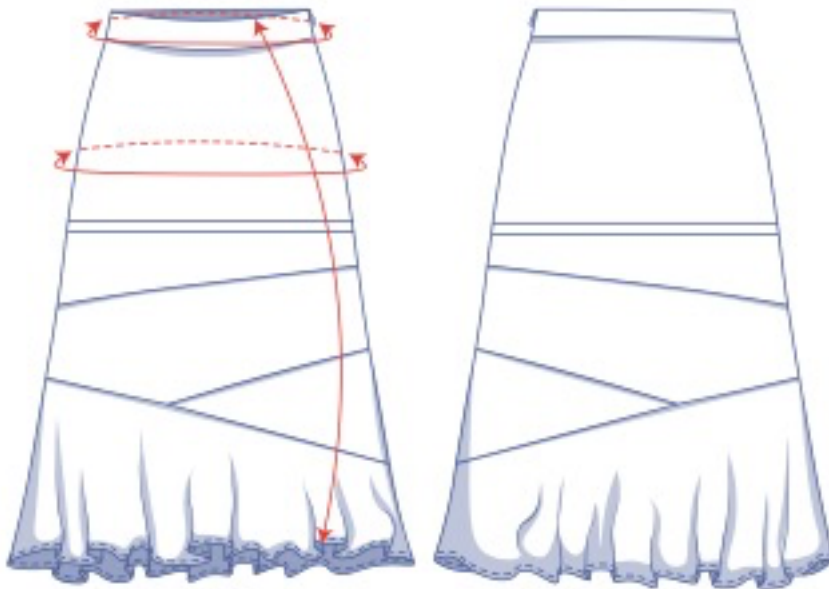


Crystal Fibre



4 - 32

pattern measurements (in cm)



size	4	6	8	10	12	14	16	18	20	22	24	26	28	30	32
side length*	81.75	82	82.25	82.25	82.5	82.75	83	83.25	84.25	84.25	84.5	84.75	85	85.25	85.25
waist	67.75	69.75	71.75	75.75	79.75	83.75	85.75	89.75	96.25	102.75	109.25	115.75	122.25	128.75	135.25
hips	92.5	96.5	100.5	103.5	106.5	109.5	112.5	115.5	121.5	126.5	131.5	136.5	141.5	146.5	151.5

* Including the waistband.

notions



- Thread
- Iron-on interfacing: max. 25 cm
- Invisible zip: 20 cm
- Fabric: see table

fabric		4	6	8	10	12	14	16	18	20	22	24	26	28	30	32
fabric width 110 cm	cm	180	195	215	215	220	220	225	225	230	250	250	255	260	260	265
fabric width 140 cm	cm	150	155	155	160	160	165	165	165	190	220	225	230	230	235	240

The corresponding fabric layout can be found on page 6 of these sewing instructions.

fabric advice



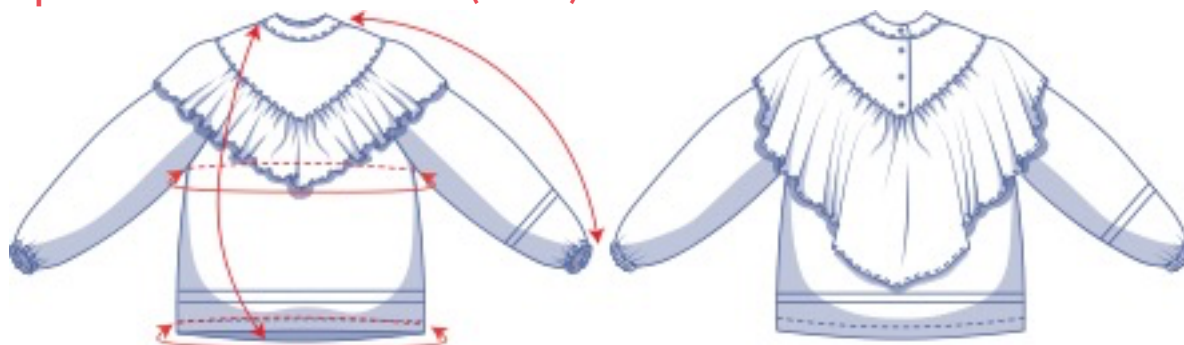
Make Crystal in a fabric with a lovely fluid drape, i.e. not too heavy or lightweight. Does the fabric have a nap (e.g. suede, corduroy) or is it striped? All the better! Crystal's pattern pieces are cut in different directions, which creates a fun and funky visual effect. Mix it up with colour blocking or alternating shades of denim, and you're guaranteed a skirt with plenty of flair. Fancy a more elegant look? Make Crystal in a soft drape fabric like satin or viscose crepe.

Edith by Fibre Good



4 - 32

pattern measurements (in cm)



size	4	6	8	10	12	14	16	18	20	22	24	26	28	30	32
length	62.5	63.25	64	64.75	65.5	66.25	67	67.75	68.75	69.75	70.75	71.75	72.75	73.75	74.75
sleeve length*	69	69.5	69.75	70	70.5	70.75	71.25	71.5	71.75	72.25	72.75	73.25	73.75	74	74.5
bust	87.5	91.5	95.5	99.5	103.5	107.5	111.5	115.5	121.5	127.5	133.5	139.5	145.5	151.5	157.5
hem circumference	94	98	102	106	110	114	118	122	128	134	140	146	152	158	164

* Including shoulder length.

notions



- Thread
- Iron-on interfacing: max. 35 cm
- Button (Ø 1.1 cm): 4
- Elastic (width 1.5 cm): see table
- Fabric: see table

elastic		4	6	8	10	12	14	16	18	20	22	24	26	28	30	32
length	cm	44	45	46	47	48	49	50	51	52	53	54	55	56	57	58

fabric		4	6	8	10	12	14	16	18	20	22	24	26	28	30	32
fabric width 110 cm	cm	215	220	220	290	290	295	300	300	305	310	320	325	330	380	385
fabric width 140 cm	cm	160	160	185	190	195	195	200	205	210	290	295	300	300	305	310

The corresponding fabric layout can be found on page 6 of these sewing instructions.

fabric advice



Edith looks lovely in all kinds of woven fabric. The ruffled trim will drape gracefully around the shoulders in a soft drape fabric e.g. viscose. In contrast, a stiff fabric will give the ruffled trim more 'bounce' and volume. In other words, you've got a broad palette of fabrics to choose from with Edith, from double gauze, viscose (crepe), chambray, lyocell, poplin, and baby wale corduroy to broderie anglaise. There's also no limit to the prints you can choose from. Think stripes, checks, floral, and more!

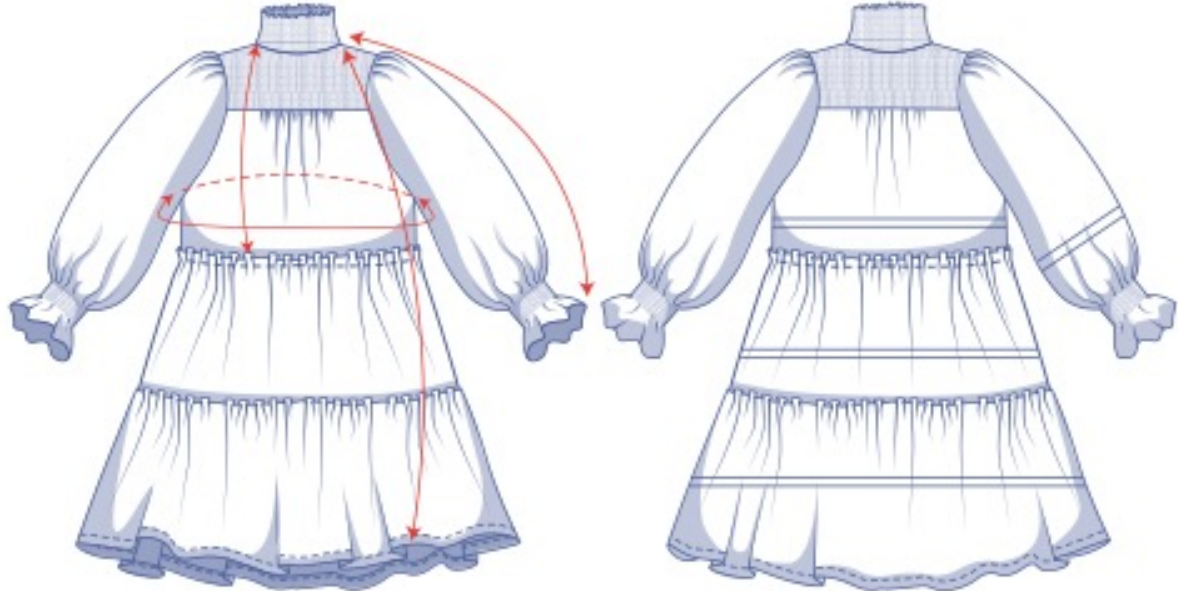
Hortence by Fibre

****✂



XS - XXXL

pattern measurements (in cm)



size	XS	S	M	L	XL	XXL	XXXL
dress length	88.75	89.75	90.75	93	95.5	98.25	99.75
top length*	60.25	62	63.75	65.75	68	70.25	72.5
sleeve length**	69.75	71.25	73	74.5	76	77.75	79.25
bust	99.75	108.25	116.75	125.25	135.5	148	160.5

* To make the top, lengthen pattern pieces 3 and 4 until you have this total length (incl. the top piece).

** Including the shoulder length.

notions



- Thread
- Elastic thread: 2 bobbins
- Fabric: see table.

You may need extra fabric if you choose a patterned or napped fabric.

fabric use (top)		XS	S	M	L	XL	XXL	XXXL
fabric width 110 cm	cm	220	225	230	235	290	300	315
fabric width 140 cm	cm	170	175	180	185	240	245	250

fabric use (dress)		XS	S	M	L	XL	XXL	XXXL
fabric width 110 cm	cm	305	310	370	385	410	440	465
fabric width 140 cm	cm	235	255	270	285	300	370	390

The corresponding fabric layout can be found on page 6 of these sewing instructions.

fabric advice



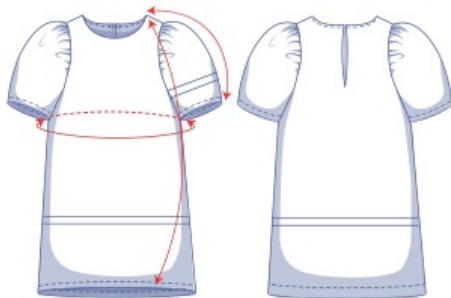
A soft drape fabric is the only way to go for the romantic Hortence. We recommend gauze or double gauze, (viscose) crepe, silk, satin, etc. Solid or patterned? You pick. Woven fabrics are the best option for shirring.

Iris by Fibre Good



2 - 14 years

pattern measurements (in cm)



size	2	3	4	5	6	8	10	12	14
dress length	42	46	50.25	54.25	58.5	62.5	66.75	70.75	75
top length*	34.5	37	39.75	42.25	45	47.75	50.25	53	55.5
sleeve length**	25	26.75	28.25	29.5	31	32.25	33.75	35.25	36.5
chest	65.75	67.75	69.75	71.75	73.75	75.75	77.75	79.75	81.75

* Shorten pattern pieces 1 and 2 to this length to make the Iris top.

** Including the shoulder length.

notions

- Thread
- Iron-on interfacing: max. 20 cm
- Hook-and-eye closure: 1
- Fabric: see table



fabric requirement dress		2	3	4	5	6	8	10	12	14
fabric width 110 cm	cm	80	90	95	105	125	145	160	190	215
fabric width 140 cm	cm	70	80	85	90	95	110	125	140	150

fabric requirement top		2	3	4	5	6	8	10	12	14
fabric width 110 cm	cm	70	75	75	80	85	95	115	125	160
fabric width 140 cm	cm	60	65	75	80	80	95	100	110	115

The corresponding fabric layout can be found on page 6 of these sewing instructions.

fabric advice



Iris looks a treat in all kinds of fabrics, from light and fluid drape to stiff and somewhat heavier fabrics. The drape you select depends on the look you're going for. Drama lovers tend towards stiff corduroy, denim, poplin, or leather(ette). If you prefer something a little more understated, then soft drape materials with minimal texture, e.g. viscose (crepe), lyocell, and satin are all good options. Solid or print, which should it be? With Iris, anything goes!

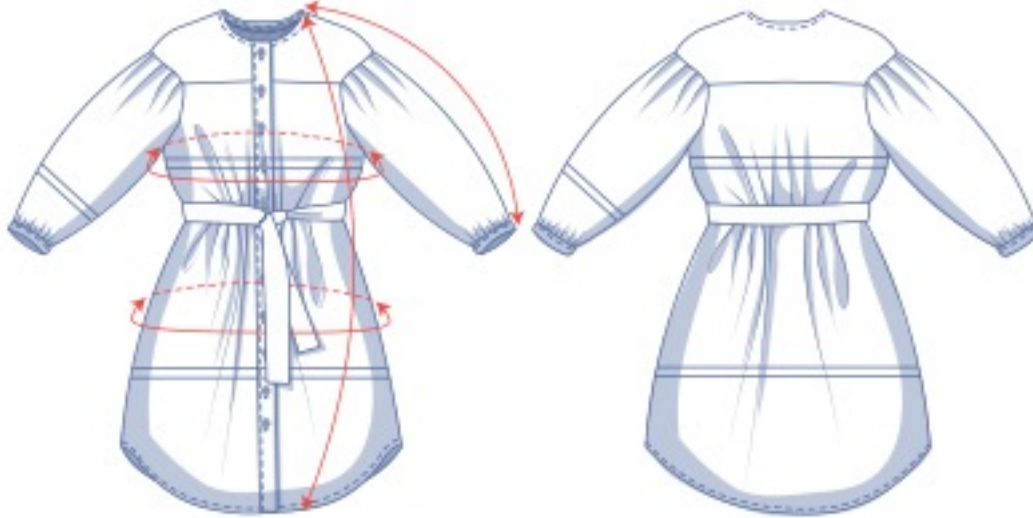
Maude by Fibre Good



4 - 32



pattern measurements (in cm)



size	4	6	8	10	12	14	16	18	20	22	24	26	28	30	32
dress length	118.5	119	119.75	120.25	120.75	121.25	123.75	124.5	128.25	129	129.75	130.5	131.5	132.25	133
top length*	60.5	61.25	62	62.75	63.5	64.25	65	65.75	66.75	67.75	68.75	69.75	70.75	71.75	72.75
sleeve length**	65	65.5	66	66.5	67	67.5	68	68.25	68.75	69.25	69.75	70	70.75	71.25	71.75
bust	88.5	92.5	96.5	100.5	104.5	108.5	112.5	116.5	122.5	128.5	134.5	140.5	146.5	152.5	158.5
hips	118	122	125.75	129.5	133.25	137.25	141	144.75	150	155.75	161.5	167.25	173.25	179	184.75

* To make the Maude top, cut pattern pieces 2 and 4 until you have this total length (incl. top). Alter the length of pattern piece 7 (button placket) as well.

** Including the shoulder length and cuff.

notions



- Thread
- Iron-on interfacing: max. 125 cm
- Buttons (Ø 1.1 cm): see table
- Fabric: see table

buttons	4	6	8	10	12	14	16	18	20	22	24	26	28	30	32
	11	11	11	11	11	11	11	11	12	12	12	12	12	12	12

fabric use top	4	6	8	10	12	14	16	18	20	22	24	26	28	30	32
fabric width 110 cm	cm	185	185	190	190	190	195	195	240	245	250	255	255	260	265
fabric width 140 cm	cm	135	135	140	140	140	145	150	160	165	190	195	195	200	205

fabric use dress	4	6	8	10	12	14	16	18	20	22	24	26	28	30	32
fabric width 110 cm	cm	305	310	315	320	325	325	330	375	390	400	415	425	450	455
fabric width 140 cm	cm	225	225	230	245	280	280	290	290	300	305	305	315	335	340

The corresponding fabric layout can be found on page 6 of these sewing instructions.

* Fabric use is not specified for size 32 because pattern piece 4 is too wide and long to fit on the given fabric width.

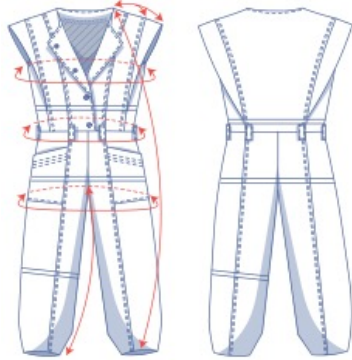
fabric advice



When it comes to selecting a fabric for Maude, you have a wide selection to choose from. Lyocell, poplin, chambray, linen, viscose (crepe), muslin, broderie anglaise, and baby wale corduroy are just a few. Even leather(ette) or thin, padded fabrics are an option.



pattern measurements (in cm)



size	4	6	8	10	12	14	16	18	20	22	24	26	28	30	32
length	134.75	135.5	136.25	137	137.75	138.5	139.25	140	141	142	143	144	145	146	147
shoulder length with sleeve trim	14.75	15	15.25	15.75	16	16.25	16.5	16.75	17.25	17.75	18	18.5	18.75	19.25	19.75
shoulder length without sleeve trim	10	10.25	10.5	11	11.25	11.5	11.75	12	12.5	13	13.25	13.75	14	14.5	15
bust	84.75	88.5	92.5	96.5	100.5	104.5	108.5	112.75	118.75	124.75	130.75	136.75	142.75	148.75	154.75
waist	89.25	91.25	93.25	97.25	101.25	105.25	107.25	111.25	117.75	124.25	130.75	137.25	143.75	150.25	156.75
hips	95.5	99.5	103.5	106.75	109.75	112.75	115.75	118.5	124.5	129.75	134.75	139.75	144.75	149.75	154.75
inseam length	58.75	58.75	59	59	59	59.25	59.25	59.25	59.5	59.75	59.75	59.75	60	60	60.25

notions



- Thread
- Iron-on interfacing: max. 10 cm
- Snap fasteners (Ø 1.5 cm): 4
- Sew-on snap fastener (Ø 0.5 cm) 1
- Bias tape (folded width 2 cm): see table
- Fabric: see table

bias tape for no sleeve trim version		4	6	8	10	12	14	16	18	20	22	24	26	28	30	32
underarm 2x	cm	16	17	18	19.5	20.5	21.5	23	24	26	27.5	29.5	31	33	34.5	36
armholes 2x	cm	27.5	28	28	28.5	28.5	29	29	29.5	32	32.5	32.5	33	33.5	34	34
total	cm	87	90	92	96	98	101	104	107	116	120	124	128	133	137	140

bias tape for sleeve trim version		4	6	8	10	12	14	16	18	20	22	24	26	28	30	32
underarm 2x	cm	16	17	18.5	19.5	20.5	21.5	23	24	26	27.5	29.5	31	32.5	34.5	36.5
total	cm	32	34	37	39	41	43	46	48	52	55	59	62	65	69	73

fabric use		4	6	8	10	12	14	16	18	20	22	24	26	28	30	32
fabric width 110 cm	cm	270	285	300	305	315	320	325	330	360	410	410	415	415	420	425
fabric width 140 cm	cm	220	220	220	250	250	255	255	255	295	300	305	315	315	320	325

The corresponding fabric layout can be found on page 6 of these sewing instructions.

fabric advice



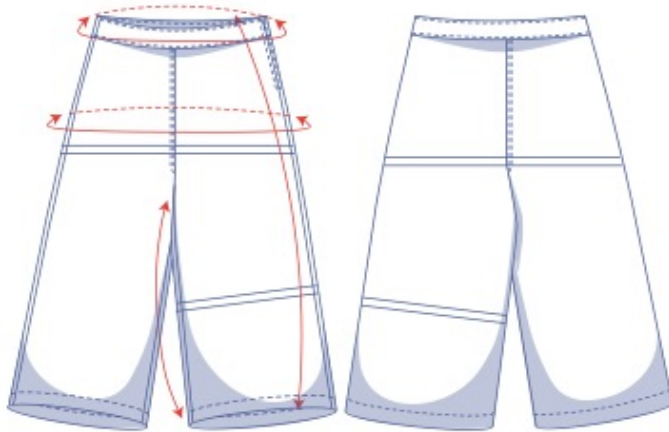
This no-nonsense jumpsuit looks great in sturdy, resilient fabrics with body, e.g. denim, corduroy, suede, leather(ette), gabardine, cotton twill. Prefer something a little softer? Omit the sleeve trim and go for a classic fabric that has a little more drape, e.g. stretch gabardine, woollen fabrics, lyocell, woven jacquard.

Opal by Fibre Good



4 - 32

pattern measurements (in cm)



size	4	6	8	10	12	14	16	18	20	22	24	26	28	30	32
side length*	92.5	93	93.5	94	94.5	95	95.5	96	96.5	97	97.5	98	98.5	99	99.25
inseam length	63.25	63.25	63.25	63.25	63.25	63.25	63.25	63.25	63.25	63.5	63.5	63.5	63.5	63.75	63.75
waistline**	65.5	67.5	69.5	73.5	77.5	81.5	83.5	87.5	94	100.75	107.25	113.75	120.25	126.75	133.25
hips	94.25	98.25	102.25	105.25	108.25	111.25	114.25	117.25	123.25	128.25	133.25	138.25	143.25	148.25	153.25

* Including the waistband.

** To ensure a waistband with a neat fit, the pattern's waist measurement is ever so slightly smaller than the measurements in the size chart.

notions

- Thread
- Iron-on interfacing: max. 40 cm
- Closed-end zip: see table
- Fabric: see table



zip		4	6	8	10	12	14	16	18	20	22	24	26	28	30	32
length	cm	18	18	18	18	18	18	18	18	20	20	20	20	20	20	20

fabric		4	6	8	10	12	14	16	18	20	22	24	26	28	30	32
fabric width 110 cm	cm	215	215	220	220	220	220	225	225	225	245	245	250	250	250	265
fabric width 140 cm	cm	170	175	185	195	200	205	215	220	225	225	230	230	230	230	250

The corresponding fabric layout can be found on page 6 of these sewing instructions.

fabric advice



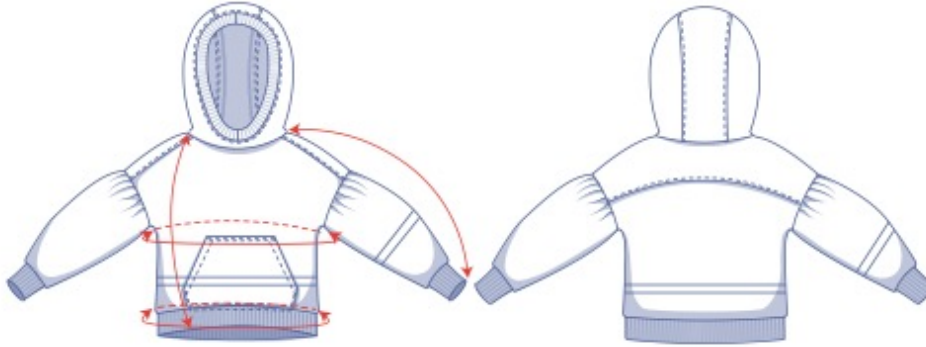
Opal works great in a variety of different fabrics. Stiffer fabrics, like denim, cotton, corduroy, etc. are all fantastic. Or you could create a different sort of visual appeal with a soft drape (woollen) fabric. Think gabardine, flannel, crepe, and more. And prints? Well, why not start with Glen check, tartan, or houndstooth? Opal is also perfect in knit fabrics (in which case, omit the zip).

Paola by Fibre Food



XS - XXXL

pattern measurements (in cm)



size	XS	S	M	L	XL	XXL	XXXL
length*	58.25	60	61.75	63.75	66	68.25	70.5
sleeve length**	58	59.75	61.5	63.25	65.25	67.5	69.75
bust	97.5	105.5	113.5	121.5	131.5	143.5	155.5
hem circumference***	87.75	95.75	103.75	111.75	121.75	133.75	145.75

* Including hem band.

** Including the shoulder length and wrist trim.

*** Measured above the hem band.

notions



Hoodless version:

- Thread
- Bias tape (folded width 2 cm): see table
- Trim fabric (35 cm wide): see table
- Fabric: see table

Hoodie version:

- Thread
- Trim fabric (35 cm wide): see table
- Fabric: see table

bias tape		XS	S	M	L	XL	XXL	XXXL
neckline	cm	60	60	65	65	65	65	65

trim fabric		XS	S	M	L	XL	XXL	XXXL
hoodless version	cm	40	40	55	55	55	55	55
hoodie version	cm	75	75	75	75	75	75	75

The corresponding fabric layout can be found on page 6 of these sewing instructions.

fabric use hoodless version		XS	S	M	L	XL	XXL	XXXL
fabric width 110 cm	cm	170	180	195	230	240	250	255
fabric width 140 cm	cm	115	120	120	125	180	185	205

The corresponding fabric layout can be found on page 6 of these sewing instructions.

fabric use hoodie version		XS	S	M	L	XL	XXL	XXXL
fabric width 110 cm	cm	210	225	235	245	255	265	275
fabric width 140 cm	cm	160	165	170	175	180	185	205

The corresponding fabric layout can be found on page 6 of these sewing instructions.

fabric advice



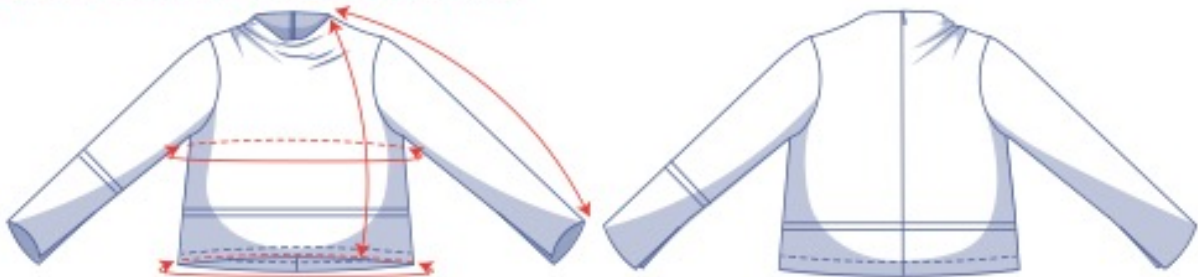
Knitted fabrics and Paola are a match made in heaven, e.g. French Terry, sweatshirt fabric, thin or even chunky-knit fabric, Ponte Roma. Make the wrist trim, hood trim, and hem band in (rib) trim fabric. Fancy pushing the envelope? Make Paola in Teddy or scuba and steal the show!

Sky by Fibre Food



XS - XXXL

pattern measurements (in cm)



size	XS	S	M	L	XL	XXL	XXXL
length	62.75	64.5	66.5	68.25	70.5	72.75	75
sleeve length*	71.75	73.5	75	76.5	78.25	80	81.75
bust**	95.75	103.75	111.75	119.75	129.75	141.75	153.75
hem circumference	91.25	99.25	107.25	115.25	125.25	137.25	149.25

* Including shoulder length.

** Keep in mind that this measurement includes ease for the cowl neck.

notions



- Thread
- Invisible zip: 40 cm
- Iron-on interfacing: max. 35 cm
- Fabric: see table

fabric		XS	S	M	L	XL	XXL	XXXL
fabric width 110 cm	cm	155	170	170	175	215	225	265
fabric width 140 cm	cm	150	155	160	165	175	180	190

The corresponding fabric layout can be found on page 6 of these sewing instructions.

fabric advice



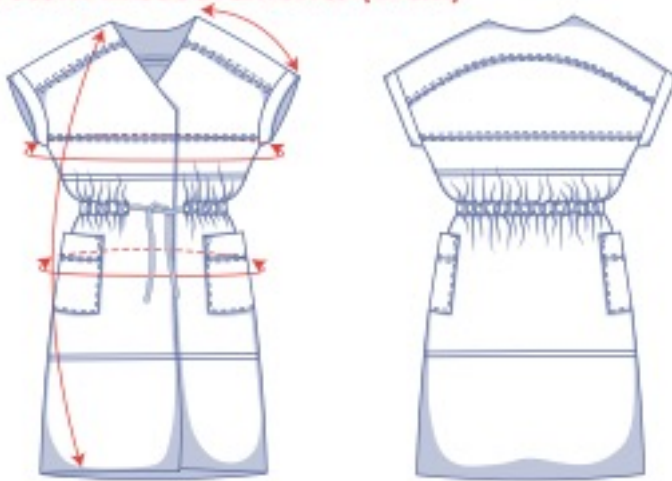
A cowl neck top like Sky calls for a lovely, soft drape fabric. You could select an incredibly drapery lightweight fabric such as satin, viscose (crepe) to a moderately fluid drape fabric such as lyocell or chambray, or even go for a heavyweight fluid drape fabric, e.g. faux suede. Jacquard or other slightly textured fabrics work as well on the condition so long as they are not too thick or stiff.

Terra by Fibre Food



XS - XXXL

pattern measurements (in cm)



size	XS	S	M	L	XL	XXL	XXXL
length	119	120.25	121.25	122.5	125	126.5	128.25
sleeve length*	28	28.75	29.75	30.5	31.5	32.5	33.5
bust	93	101	109	117	127	139	151
hips	97.5	105.5	111.5	117.5	126.5	136.5	148.5

* Including shoulder length.

notions



- Thread
- Iron-on interfacing: max. 95 cm
- Cord: 160 cm (sz. XS - L), 220 cm (sz. XL - XXXL)
- Snap fastener (Ø 0.5 cm): 1
- Elastic (width 2 cm): see table
- Fabric: see table

elastic		XS	S	M	L	XL	XXL	XXXL
length	cm	62	65	70.5	75	81	90.5	100

fabric		XS	S	M	L	XL	XXL	XXXL
fabric width 110 cm	cm	255	260	265	270	275	310	315
fabric width 140 cm	cm	190	195	195	200	275	280	285

The corresponding fabric layout can be found on page 6 of these sewing instructions.

fabric advice Made in a comfy, soft fabric like French terry, sweatshirt fabric, interlock, faux suede, or leatherette, the Terra dress is your new cosy go-to. Double gauze, linen, denim, and cotton twill are also great options. If we've got one tip, then it's this – don't go too lightweight! Terra looks good with some extra body.



Zarah by Fibre Good

***✂✂



4 - 32

pattern measurements (in cm)



size	4	6	8	10	12	14	16	18	20	22	24	26	28	30	32
length	52.25	53	53.75	54.75	55.75	56.75	57.75	58.75	61	62.25	63.5	64.75	66	67.25	68.5
sleeve length*	68.75	69.25	69.75	70.5	71	71.5	72	72.75	73.25	74	74.75	75.5	76.25	76.75	77.75
bust	99	102.75	106.5	110.25	114	117.75	121.25	125	131.75	137.25	142.75	148.25	153.5	158.75	164.25
hem circumference	98	102	106	110	114	118	122	126	132	138	144	150	156	162	168

* Including shoulder length and cuff.

notions



- Thread
- Iron-on interfacing: max. 65 cm
- Buttons (Ø 1.1 cm): see table
- Fabric: see table

buttons	4	6	8	10	12	14	16	18	20	22	24	26	28	30	32
	14	14	14	14	14	14	14	14	14	14	15	15	15	15	15

fabric		4	6	8	10	12	14	16	18	20	22	24	26	28	30	32
fabric width 110 cm	cm	190	195	220	225	235	260	265	270	280	285	285	290	295	300	305
fabric width 140 cm	cm	145	150	155	170	175	175	180	185	210	230	235	240	250	255	265

The corresponding fabric layout can be found on page 6 of these sewing instructions.

fabric advice The Zarah top works well in all kinds of fabric. One thing is clear though, and that's that its statement sleeves call for a stiffer fabric, e.g. poplin, silk taffeta, nylon, leather(ette), cotton twill, organza, oilskin. If you prefer a top that is less voluminous then select a fabric with a more fluid drape like cotton voile, double gauze, or viscose (crepe).

